

Figure 13. Freight Types Subject to Penalty.

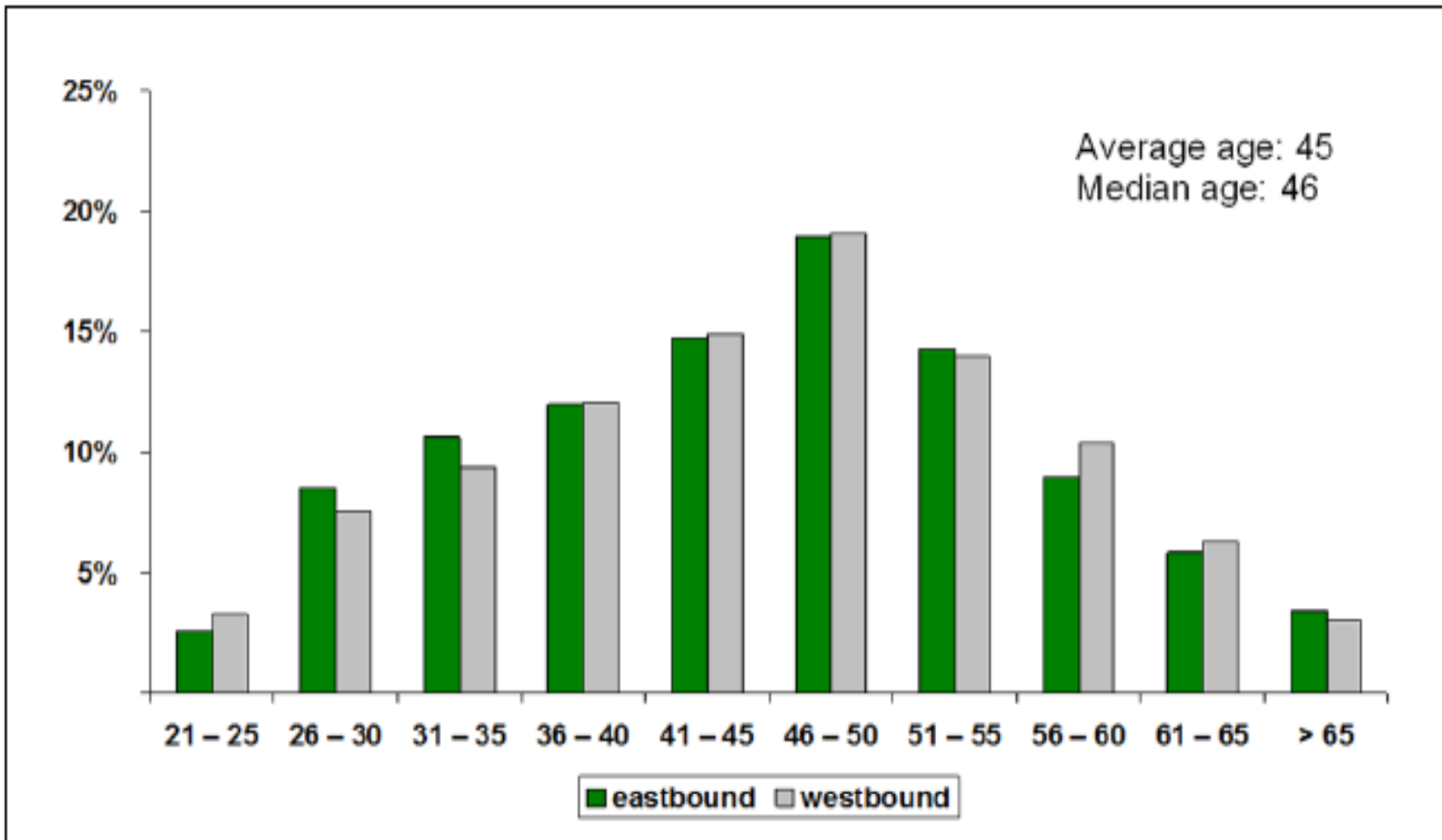


Figure 15. Age Range of Drivers Surveyed.

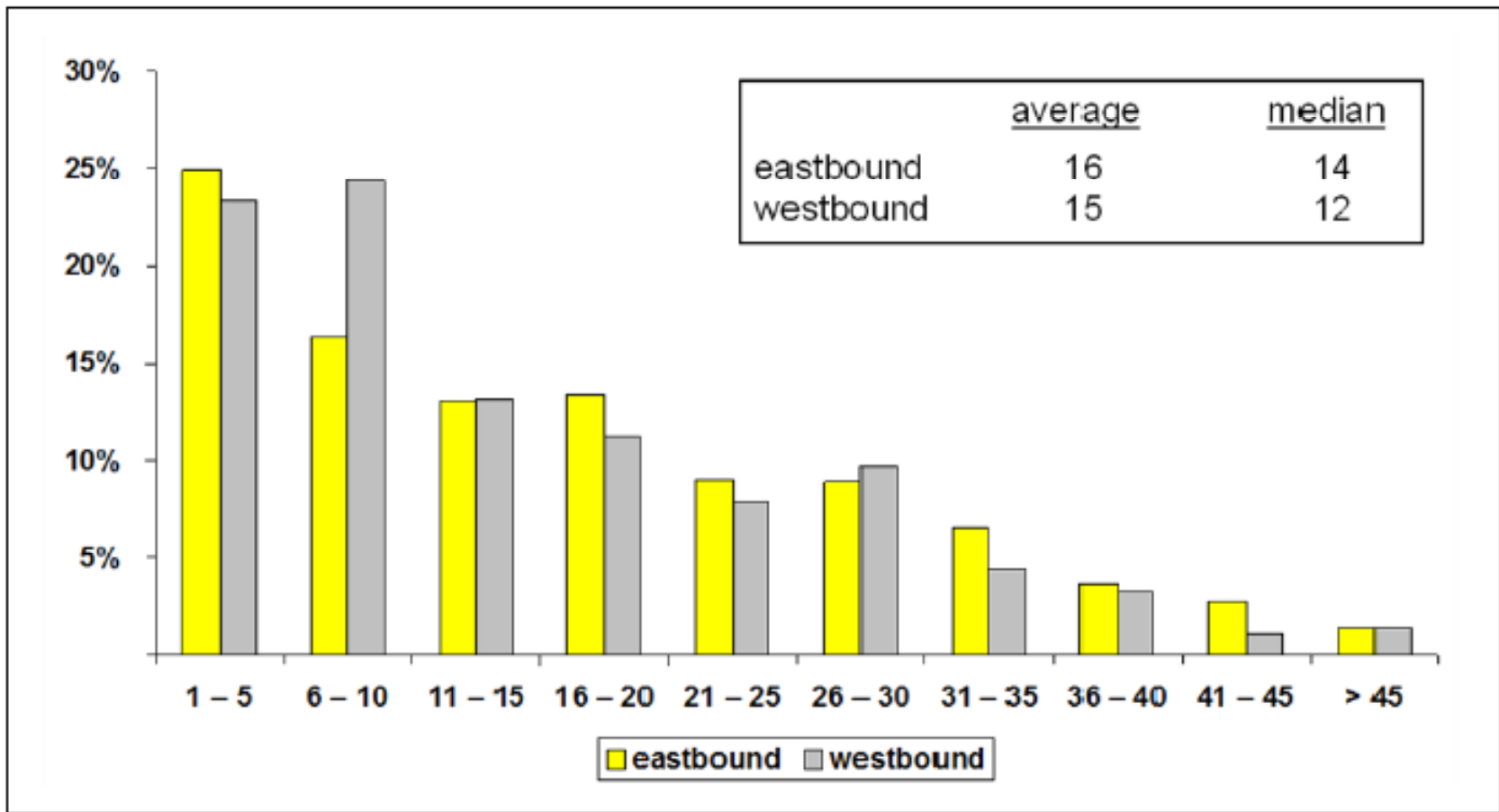


Figure 16. Number of Years of Driving Experience.



- Although not explicitly captured in the survey, it was observed by surveyors that approximately 7 to 8 % of drivers were not fluent in English. Surveyors indicated that the predominant non-English languages were Spanish, Eastern-European, Russian, and Indian/Pakistani. It is unknown from the surveys whether these drivers could read English which could affect the efficacy of dynamic message signs.

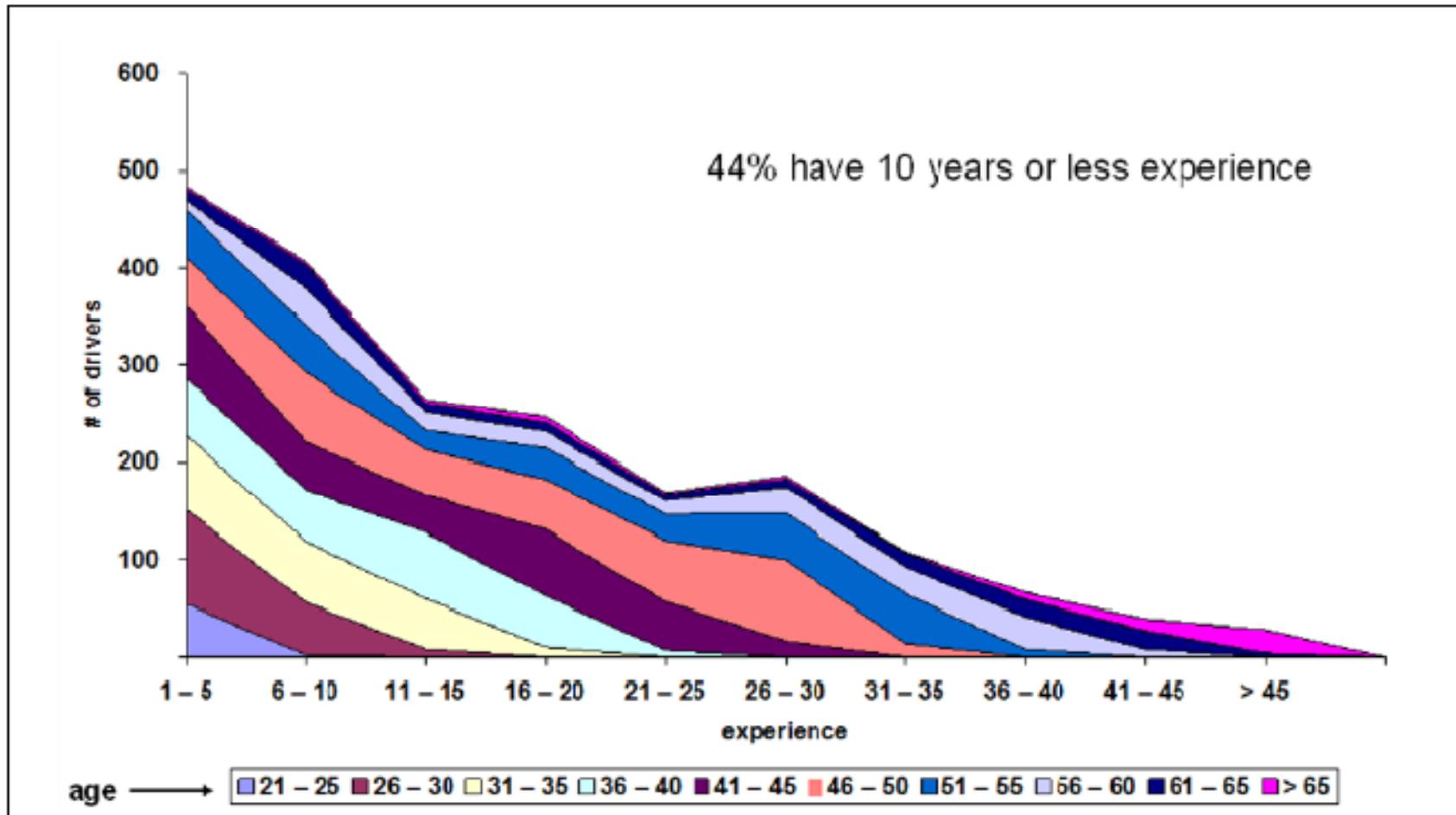


Figure 17. Number of Years of Driving Experience by Age Group.

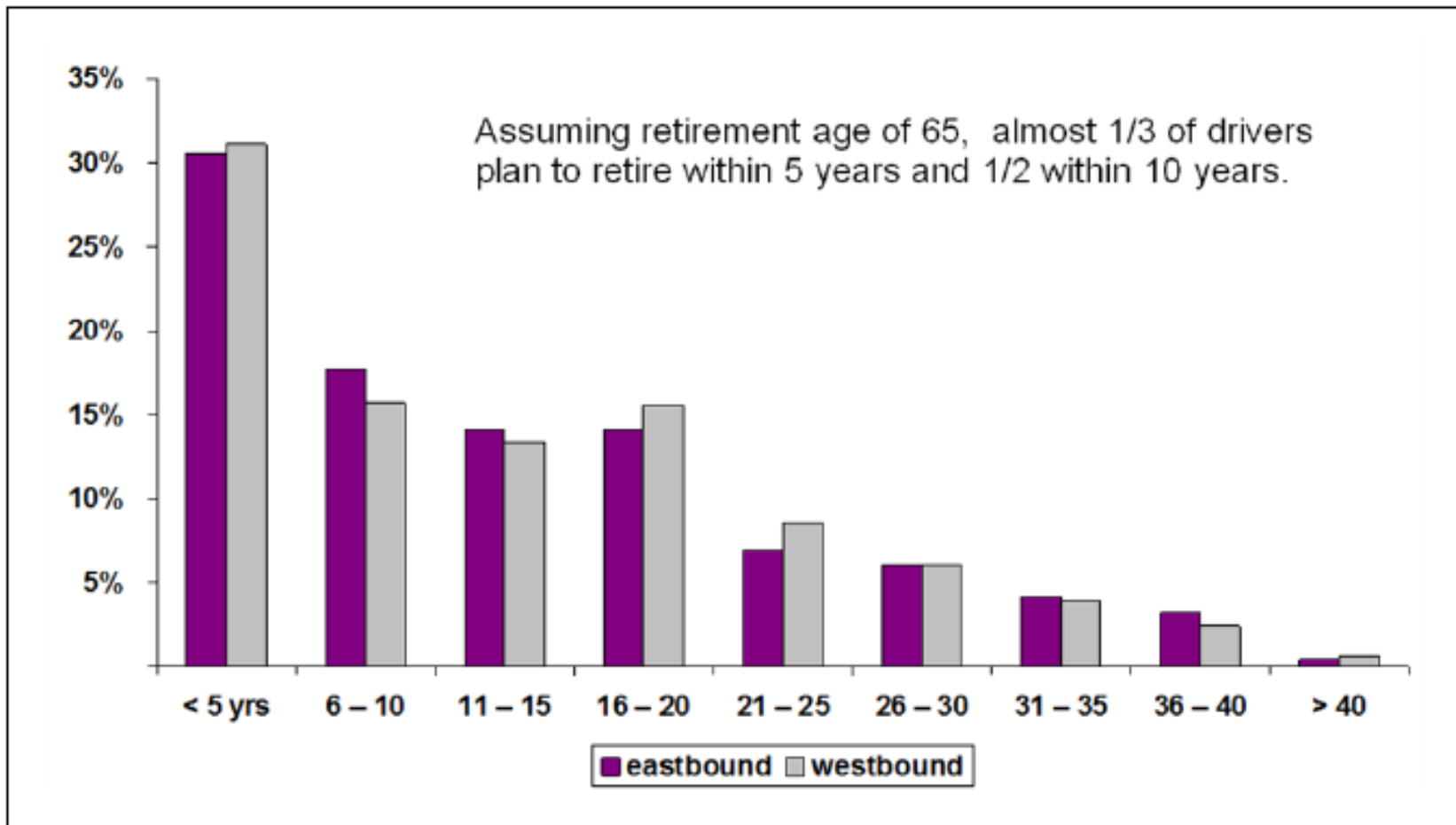


Figure 18. Number of Drivers Surveyed Intending to Retire.



Tables 6b and 6c. Origins and Destinations for Westbound Freight.

Origin states	#	% of total	cum %
Illinois	109	11%	—
Nebraska	104	10%	21%
Iowa	94	9%	31%
Missouri	89	9%	40%
Ohio	59	6%	45%
Indiana	55	5%	51%
Wisconsin	47	5%	56%
Pennsylvania	41	4%	60%
Tennessee	38	4%	64%
Kansas	34	3%	67%
Michigan	33	3%	70%
Minnesota	33	3%	74%
North Carolina	25	2%	76%
New York	22	2%	78%
Kentucky	22	2%	80%
Ontario	22	2%	83%

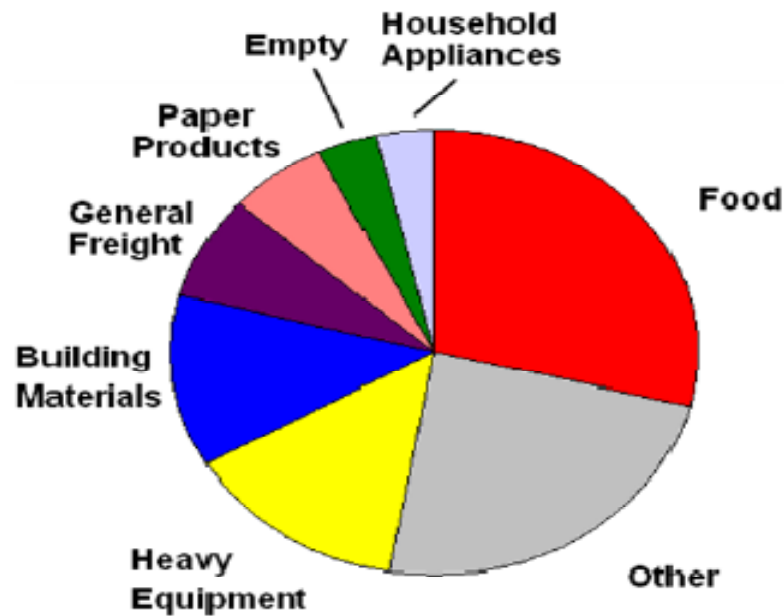
Destination states	#	% of total	cum %
Utah	258	26%	—
California	255	25%	51%
Oregon	113	11%	63%
Washington	88	9%	71%
Idaho	64	6%	78%
Nevada	63	6%	84%
Colorado	19	2%	86%
Montana	10	1%	87%
Calgary/AB	9	1%	88%
British Columbia	5	<1%	88%
Wyoming	112	11%	100%



Tables 7b and 7c. Origins and Destinations for Eastbound Freight.

Origin states	#	% of total	cum %
Utah	410	41%	—
California	222	22%	63%
Wyoming	91	9%	72%
Oregon	87	9%	80%
Idaho	65	6%	87%
Washington	57	6%	92%
Nevada	49	5%	97%
other	29	3%	100%

Destination states	#	% of total	cum %
Wyoming	215	21%	—
Colorado	123	12%	33%
Utah ¹	72	7%	41%
Illinois	65	6%	47%
Nebraska	39	4%	51%
Missouri	34	4%	54%
Ohio	34	3%	58%
Wisconsin	32	3%	61%
Minnesota	29	3%	64%
Texas	29	3%	67%
Iowa	27	3%	69%
Pennsylvania	23	2%	72%
Tennessee	22	2%	74%

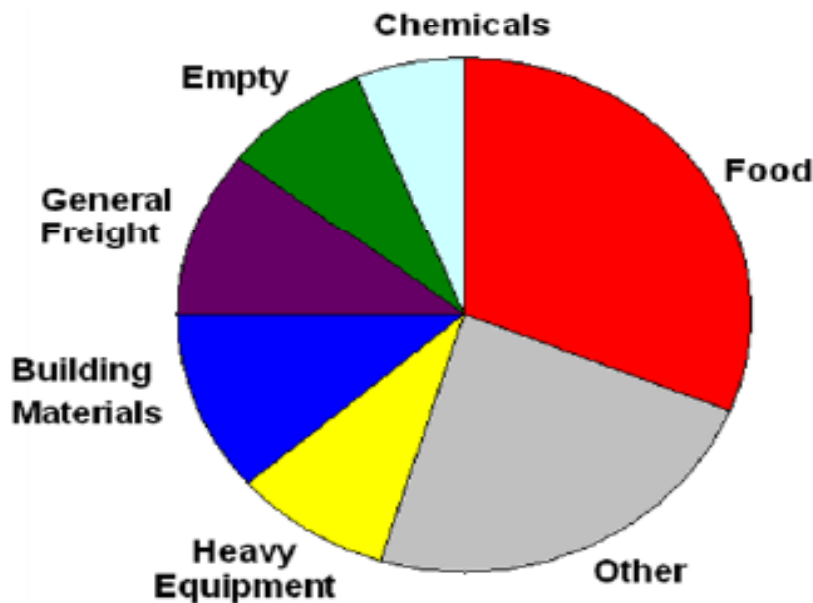


Note: *Other* is a category used when freight did not fit into any of the pre-defined categories. In the chart above "Other" represents the combined percentage of shipments of the *Other* category plus the aggregate small percentage shipments for the 8 named categories.

Categorized with "other" on graph

Contents	#	% of total	cum %
Food	283	28%	—
Heavy equipment	139	14%	42%
Building materials	129	13%	55%
Other	105	10%	65%
General freight	82	8%	74%
Paper products	63	6%	80%
Auto related	45	4%	84%
Household related	39	4%	88%
Chemicals	36	4%	92%
Empty	33	3%	95%
Electrical	17	2%	97%
Grain	11	1%	98%
Office equipment	10	1%	99%
Livestock	8	1%	100%
Total	1,002		

Figure 25. Distribution of Westbound Freight by Category.



East Bound Traffic

Contents	#	% of total	cum %
Food	315	31%	—
Building materials	116	11%	43%
General Freight	105	10%	53%
Heavy equipment	89	9%	62%
Empty	86	9%	70%
Other	64	6%	77%
Chemicals	61	6%	83%
Household related	53	5%	88%
Auto related	38	4%	92%
Mail	30	3%	95%
Paper products	29	3%	98%
Livestock	9	1%	99%
Grain	8	1%	99%
Electrical	4	0%	100%
Office equipment	3	0%	100%
Total	1,010		

Note: *Other* is a category used when freight did not fit into any of the pre-defined categories. In the chart above "Other" represents the combined percentage of shipments of the *Other* category plus the aggregate small percentage shipments for the 8 named categories.

Categorized with "other" on graph

Figure 26. Distribution of Eastbound Freight by Category.